



Event Website Traffic Information

第38回



# NAHA MARATHON

## The 38th Naha Marathon

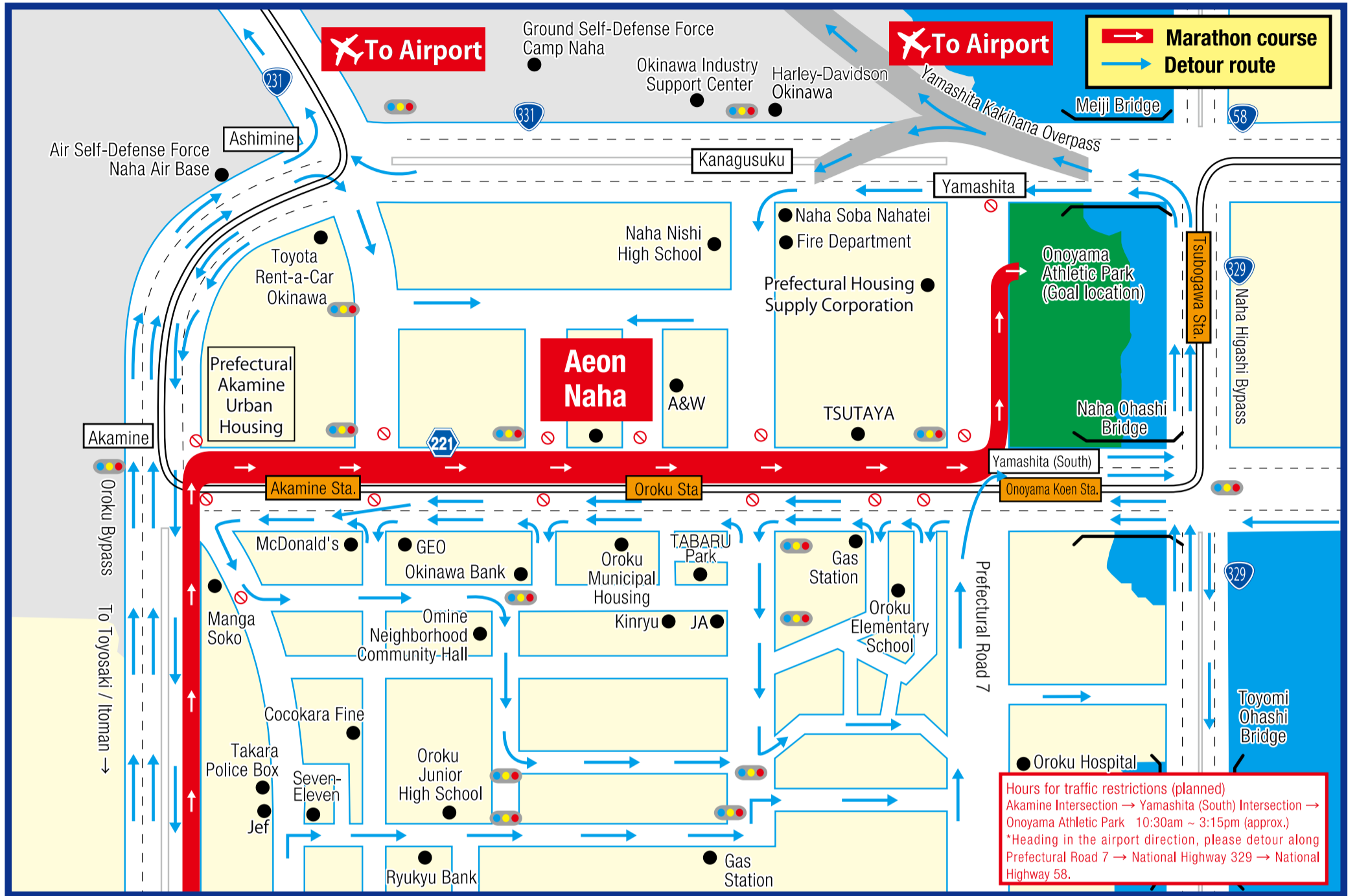
Inquiries about traffic restrictions (English support)  
Naha Marathon Call Center  
TEL.050-3786-7855

(Operation period: November 29 (Fri) ~ December 1, (Sun))  
English support Operation is available only on December 1

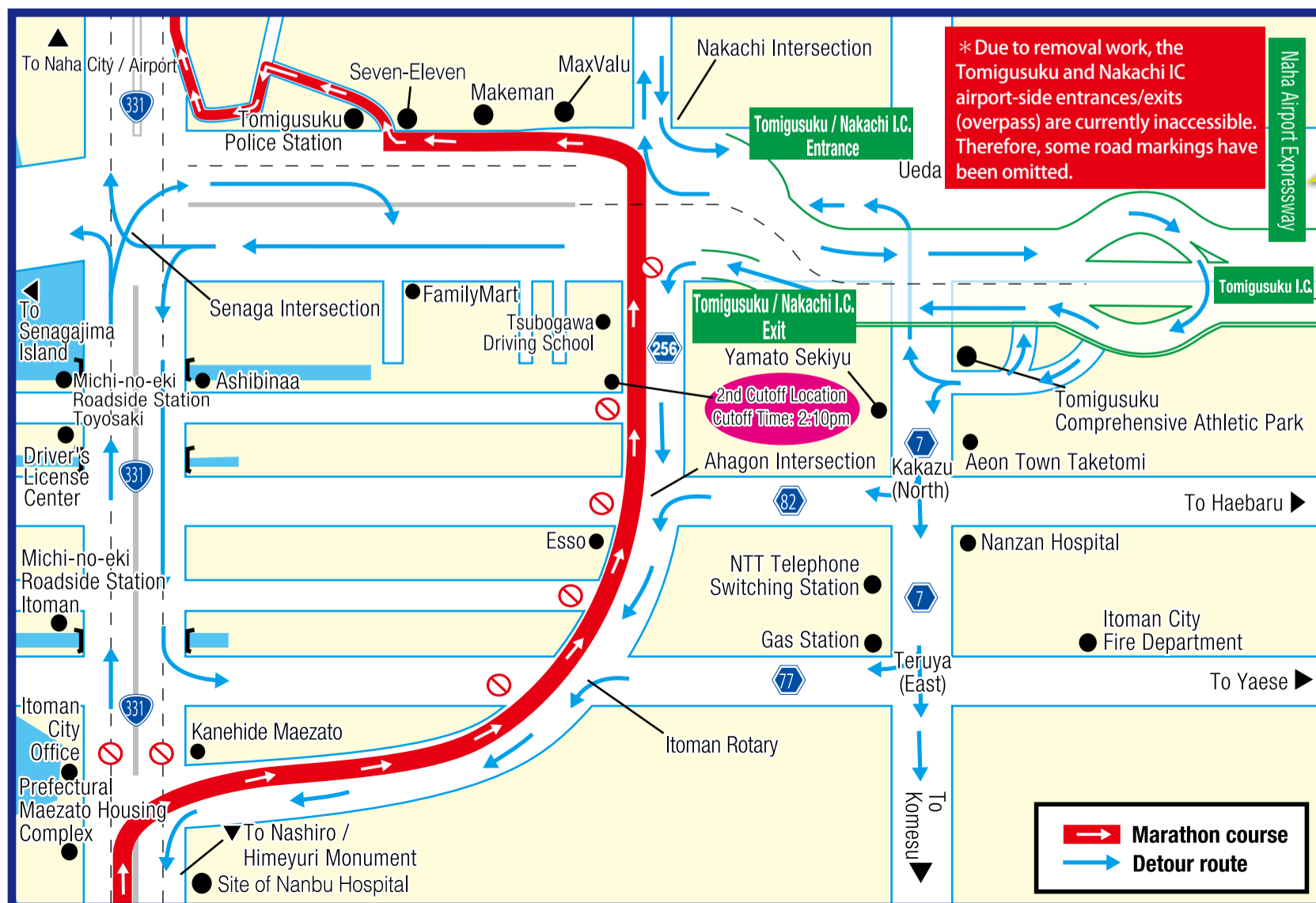
### Cooperation request

## Detour routes for Naha Airport and Aeon Naha districts

The area from Akamine Intersection on Prefectural Road 221 to Yamashita (South) intersection will completely restricted.



## Detour routes for Toyosaki / Nishizaki



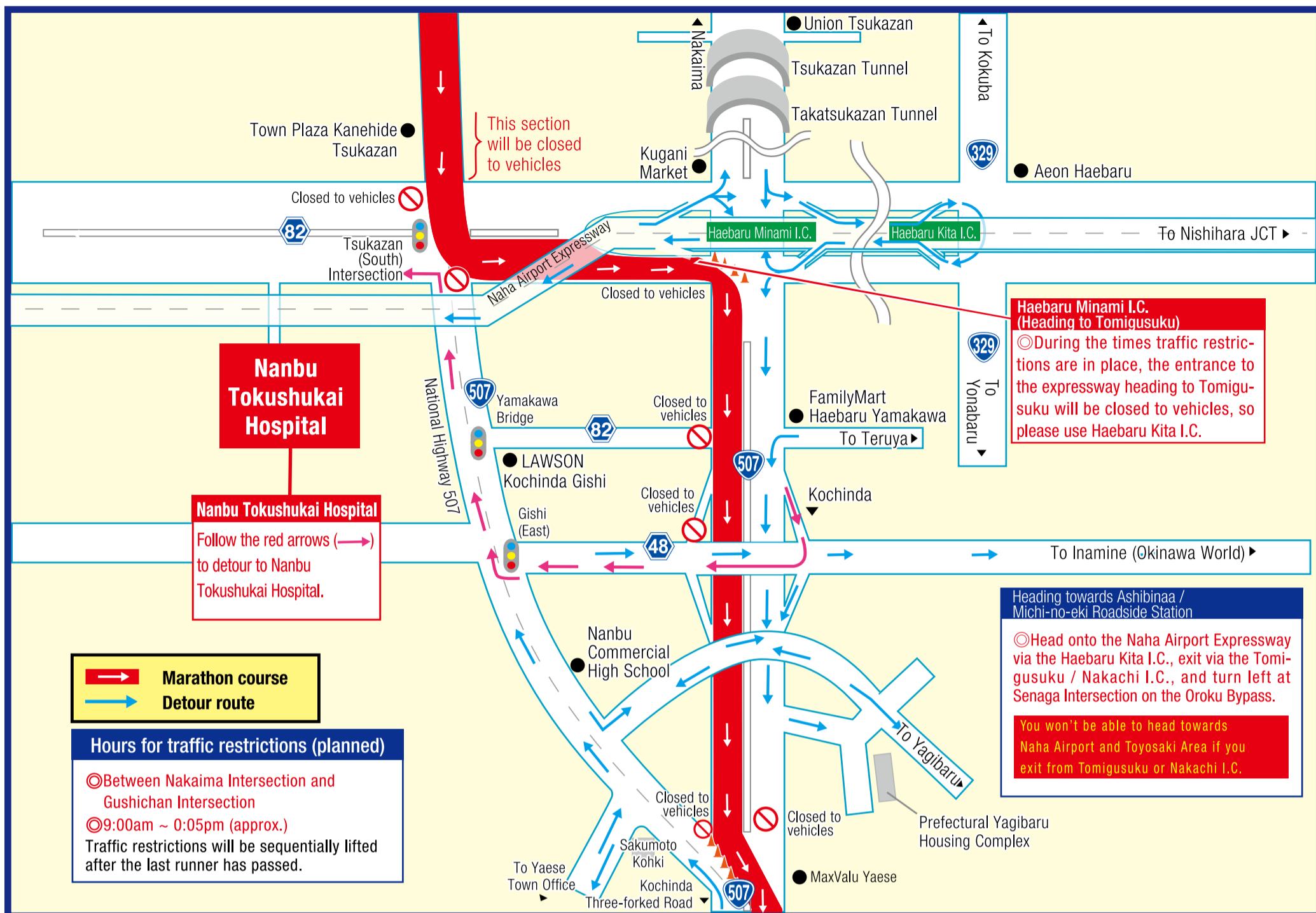
**Naha Airport Expressway** is a car-only road. Please be aware that motorcycles under 125cc and scooters are not allowed on the expressway.

### WARNING

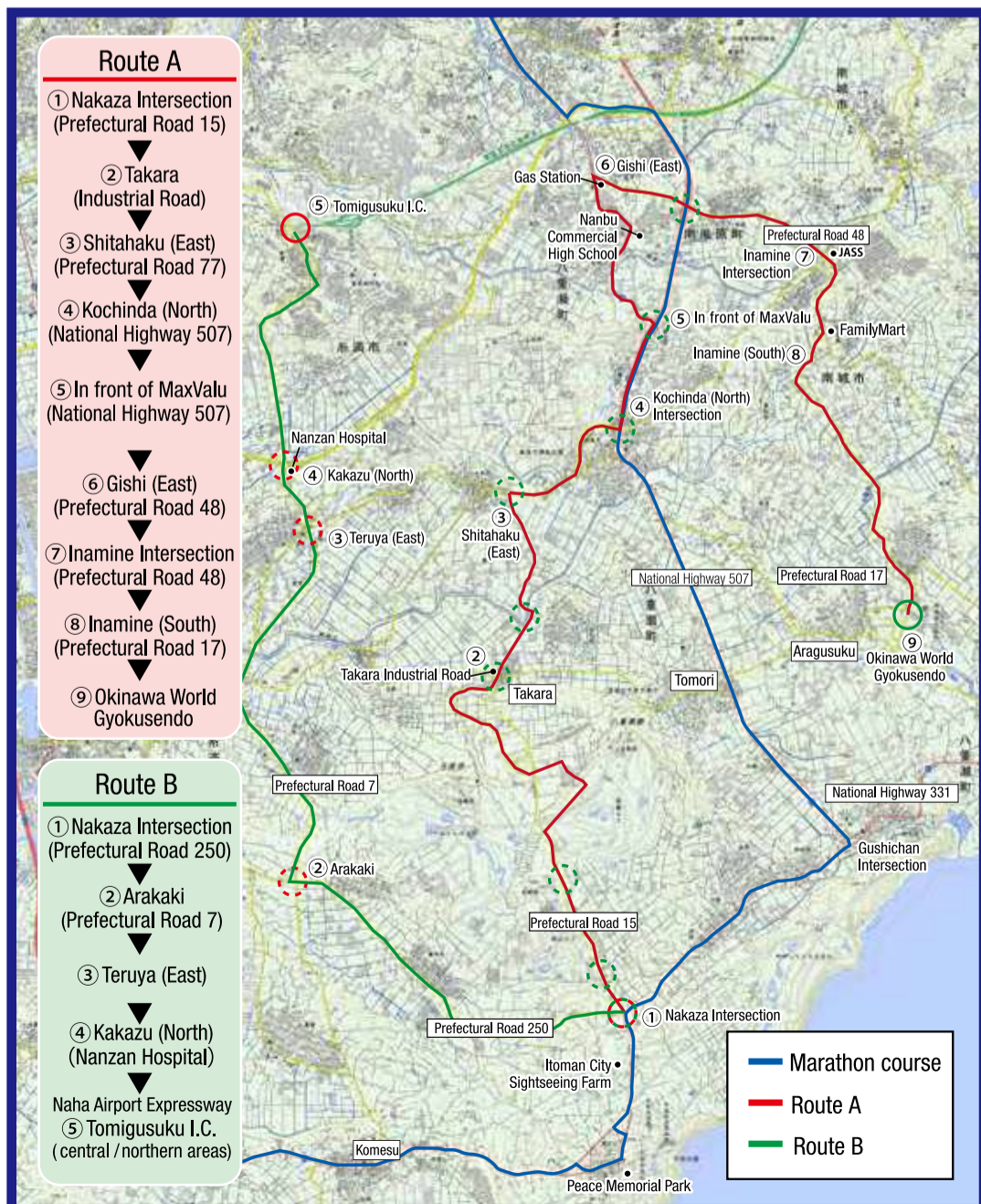
To get to Naha Airport using the expressway, please exit to the local road at either Nishihara Interchange or Naha Interchange.

- ① Hours for traffic restrictions (planned)  
Itoman Rotary ~ Naha City Med Assoc. Naha Nursing School  
10:00am ~ 2:10pm (approx.)  
\*Traffic restrictions will be sequentially lifted after the last runner has passed.
- ② Hours for traffic restrictions (planned)  
Ahagon Intersection ~ Oroku Bypass  
10:00am ~ 3:15pm (approx.)  
\*Traffic restrictions will be sequentially lifted after the last runner has passed.

# Detour routes for Nanbu Tokushukai Hospital, Tomigusuku, and Nakachi I.C. area



## Detour routes from Nakaza Intersection



## Parking Information

