

第35回



NHA MARATHON

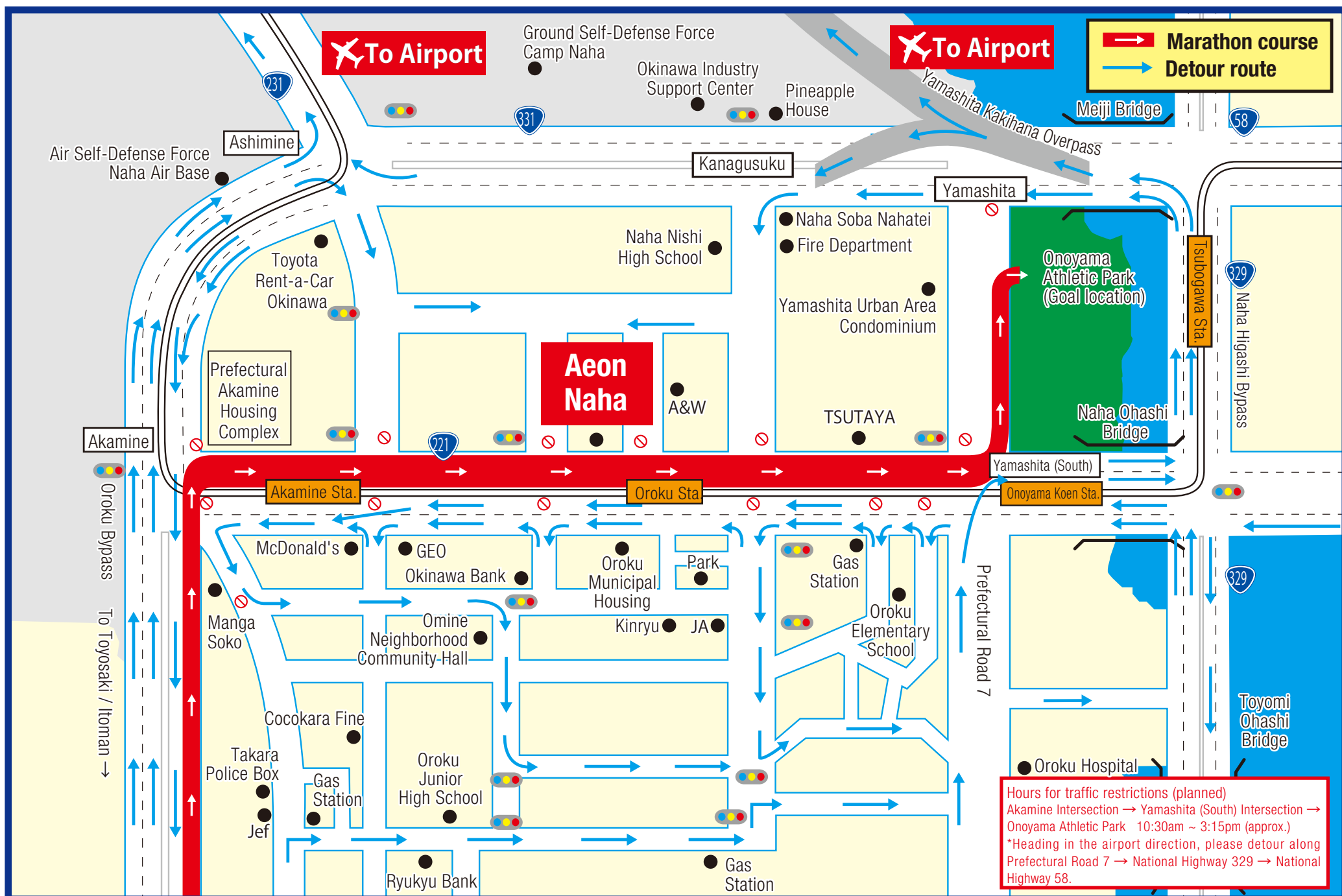
The 35th Naha Marathon

Inquiries about traffic restrictions (multilingual)
 Naha Marathon Call Center
 TEL.050-3786-7855
 Skype Name (Multilingual) English nahan-run-call-en Chinese nahan-run-call-ch
 (Operation period: November 29 (Fri) ~ December 1, (Sun))
 Multilingual Operation is available only on December 1

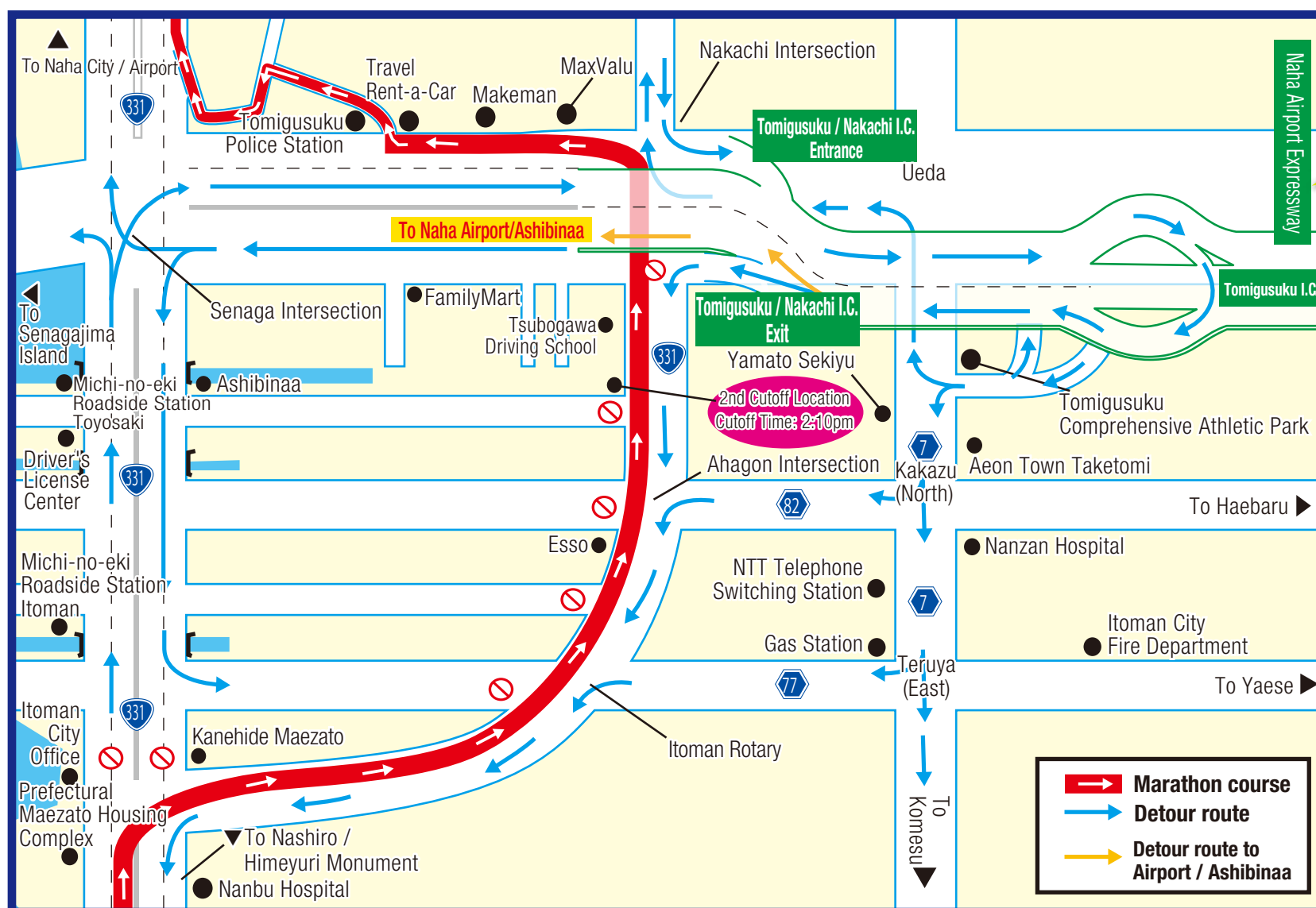
Cooperation request

Detour routes for Naha Airport and Aeon Naha districts

The area from Akamine Intersection on Prefectural Road 221 to Yamashita (South) intersection will completely restricted.



Detour routes for Toyosaki / Nishizaki



Naha Airport Expressway is a car-only road. Please be aware that motorcycles under 125cc and scooters are not allowed on the expressway.

From Nakachi Intersection, heading towards Ashibinaa / Michi-no-eki Roadside Station

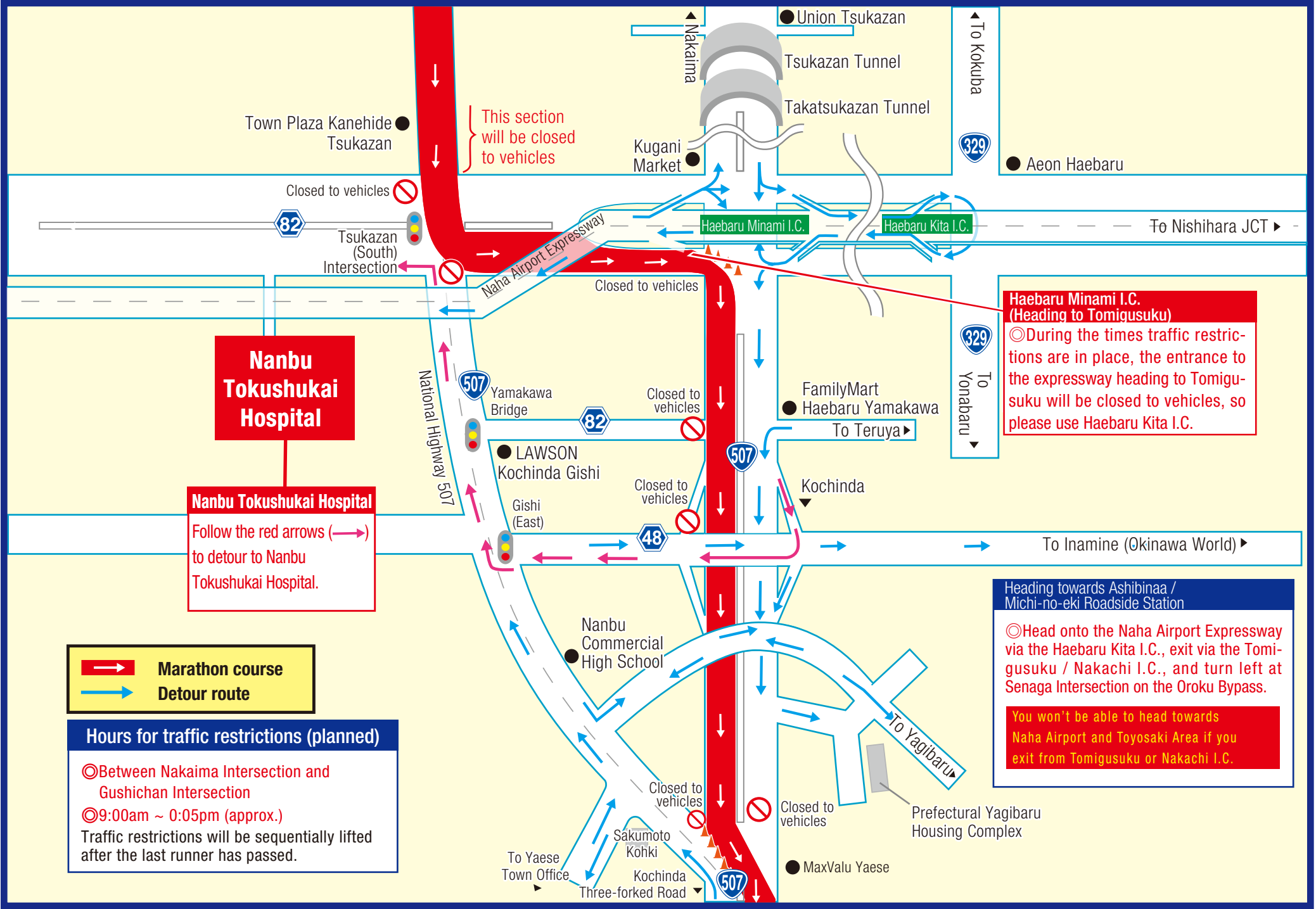
Enter to the Expressway via the Tomigusuku / Nakachi I.C., detour to Tomigusuku I.C., and exit from final destination of Naha Airport Expressway, then turn left at Oroku Bypass Intersection.

You won't be able to head towards Naha Airport and Toyosaki Area if you exit from Tomigusuku or Nakachi I.C.

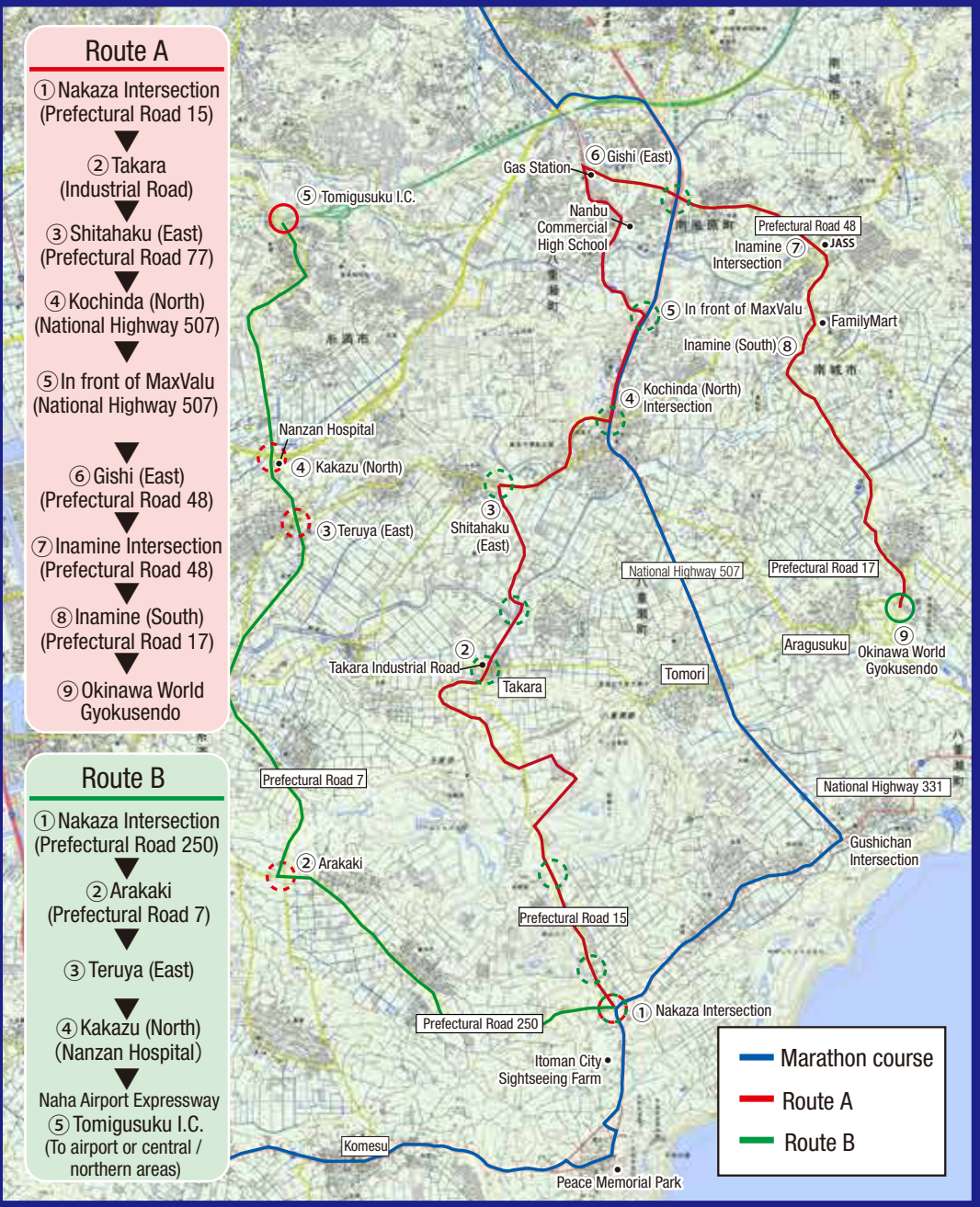
Hours for traffic restrictions (planned)
 Itoman Rotary ~ Naha City Med Assoc. Naha Nursing School 10:00am ~ 2:10pm (approx.)
 *Traffic restrictions will be sequentially lifted after the last runner has passed.

Hours for traffic restrictions (planned)
 Ahagon Intersection ~ Oroku Bypass 10:00am ~ 3:15pm (approx.)
 *Traffic restrictions will be sequentially lifted after the last runner has passed.

Detour routes for Nanbu Tokushukai Hospital, Tomigusuku, and Nakachi I.C. area



Detour routes from Nakaza Intersection



Parking Information

